

RBE - Retiro Baixo Energética



Hydro Power Plant

HPP Retiro Baixo

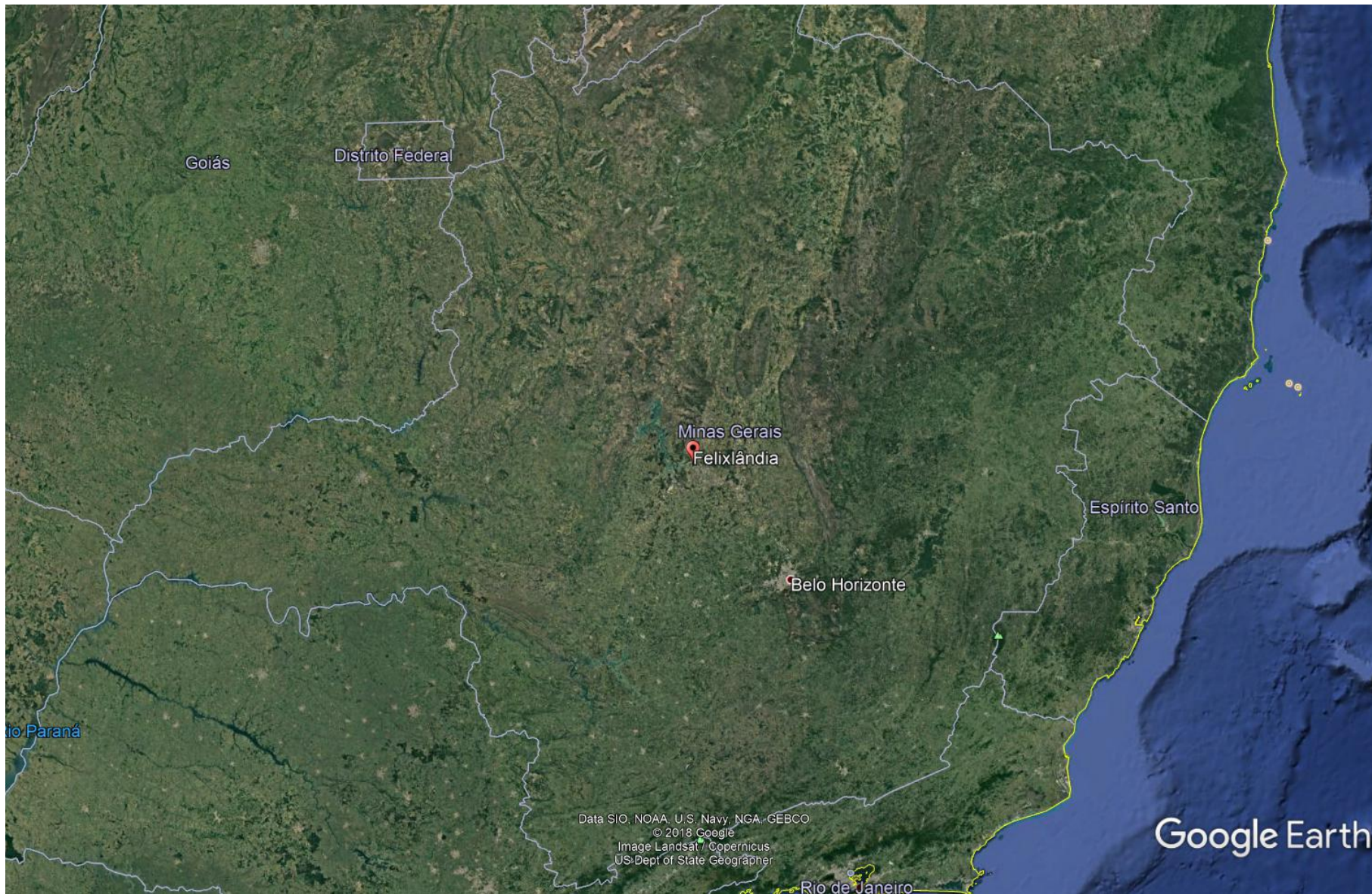
- ▶ 82 MW installed capacity
- ▶ Located between the municipalities of Curvelo and Pompéu (MG), on the low course of Paraopeba River, a tributary of São Francisco River. The Paraopeba River rises in municipality of Cristiano Ottoni and is 512 km long until meets São Francisco River.
- ▶ Retiro Baixo HPP is located near municipality of Felixlândia, approximately 5 km from reservoir of Três Marias HPP.
- ▶ Geographic coordinates:
 - ▶ $18^{\circ} 52'47.62''\text{S}$
 - ▶ $44^{\circ} 46'34,080''$

HPP Retiro Baixo

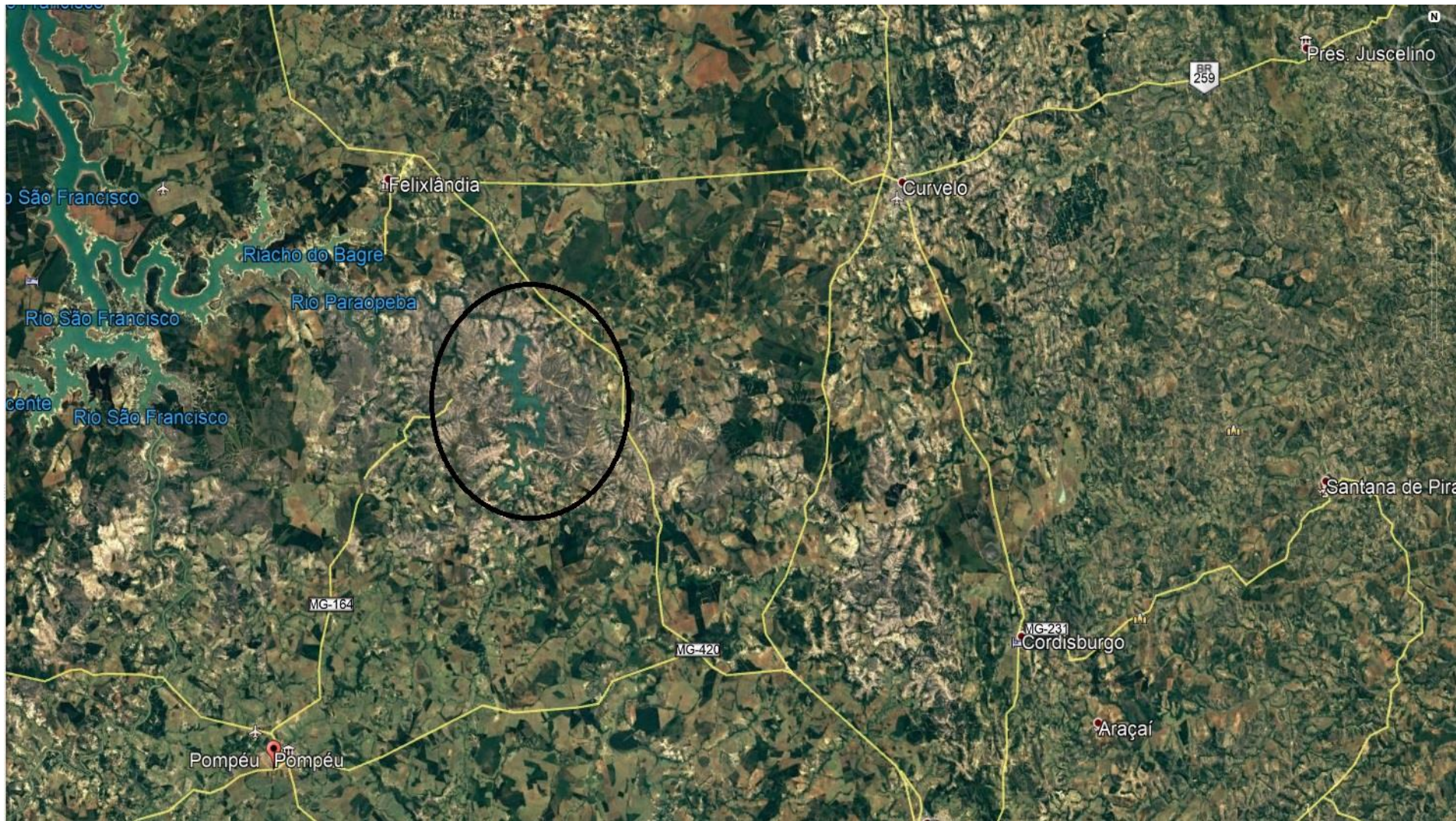
- ▶ Power: 82 MW (2 41MW generators)
- ▶ Firm Energy: 38.5 MW
- ▶ Turbines: Two - Kaplan type
- ▶ Reservoir Area: 22.58 km²
- ▶ Level of the Crest of the Bus: 619 m
- ▶ Bus Length: 1.3 km
- ▶ Maximum Bus Height: 44 m
- ▶ AT. Normal minimum: 614 m
- ▶ AT. Normal maximum: 616 m
- ▶ AT. Max. Maximum: 617 m
- ▶ Maximum depth: 44 m
- ▶ Average depth: 22 m

Location





18° 40'48.68"S 44° 55'01.63"O





General information

HPP- Retiro Baixo Energia

- ▶ Installed capacity: 82 MW
- ▶ Production 19.67 MWm
- ▶ Physical Guarantee: 35.62 MW
- ▶ Capacity factor = 43% physical guarantee
- ▶ Capacity factor = 24% production-
- ▶ Compensated in the MRE, energy reallocation mechanism
- ▶ WEB SITE: <http://rbe.com.br/rbe/>